

Lighting

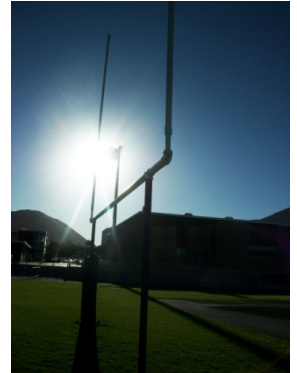
Students are to take pictures of different types of lighting. Front, Back, Side, and Soft.

DUE Tuesday December 11, 2012

- Try to eliminate multiple light sources, so you only have one light source in your photo.
- Have an object/subject, don't do landscapes.
- Take 24 pictures of lighting (6 each). Make a contact sheet for all 24. Edit your best 4 in Photoshop and turn them in individually as JPEGs.

- **Back Lighting**

- Subjects that transmit some light can take on a beautiful translucent quality.
- Edges of the object are illuminated, causing an outline of light against dark.
- When the exposure is based on background brightness a silhouette is created.



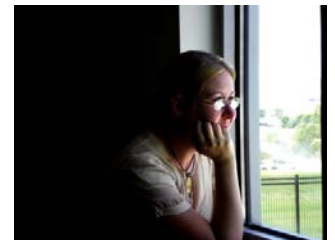
- **Front Lighting**

- Illuminated the subject evenly with few shadows seen from the camera position.
- Light comes from BEHIND the camera position.
- Little info is hidden in shadow areas.
- A great use of this lighting would be soft shadow-less portraits.



- **Side Lighting**

- Light comes in from the side to strike your subject.
- Natural side lighting occurs in the early morning or late evening.
- Side lighting adds depth and enhances textural qualities.



- **Diffused/Soft Lighting**

- Diffused light is scattered light. The light bounces around and comes from all directions.
- There is no noticeable light source.
- The clouds on an overcast day make a big diffused light source.

